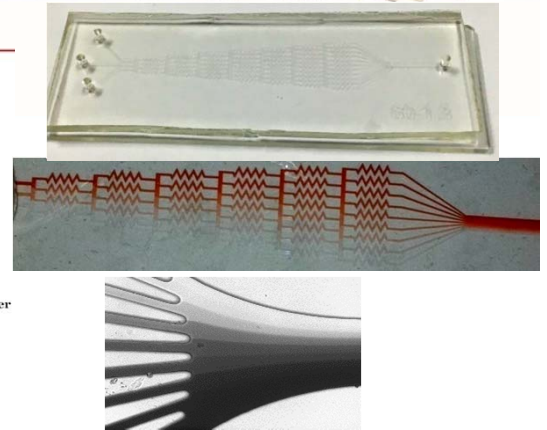
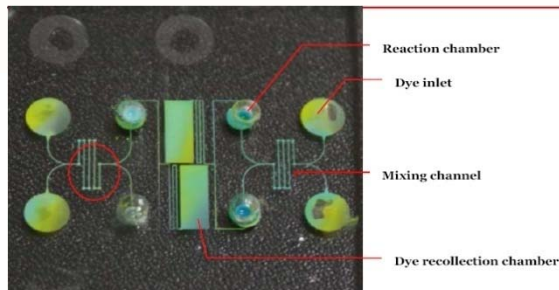
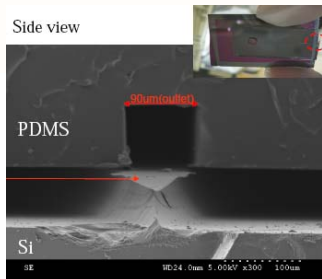


# 生醫感測器/微流體晶片製程服務平台



承諾 · 熱情 · 創新  
Commitment · Passion · Innovation

## Microfluidic Chip



### Replica Mold

- Substrate clean
- Mold 1 Lithography-SU8
- Mold 2 Lithography-AZP series
- Mold 2 Pattern etching
- Mold 2 PR stripping

### PDMS replica & bonding

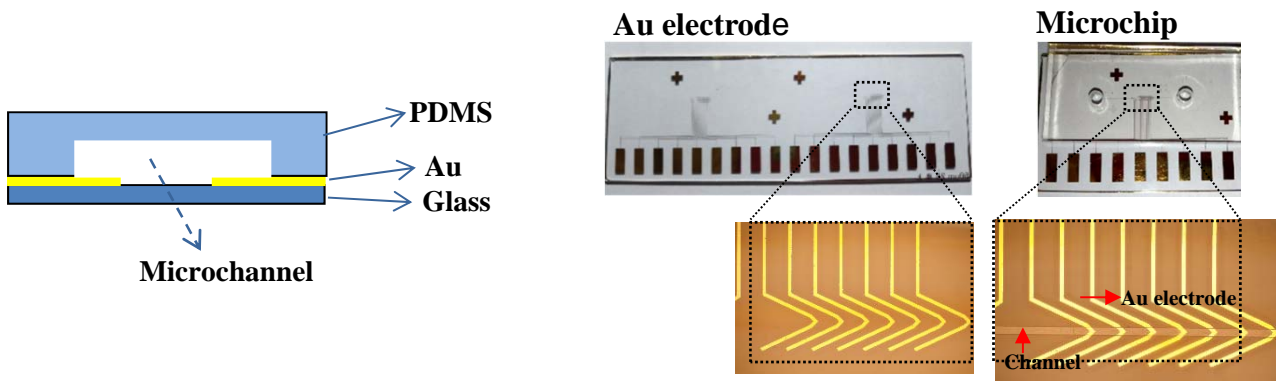
- PDMS mixing and degassing
- PDMS de-molding & drilling
- O<sub>2</sub> plasma treatment
- Bonding alignment
- Bonding curing

Repeat Process 2 ~ 4 molds for 3D Micro-fluidic Chip

	Process Step	Spec
Passivation	Passivation (SiOx)	1um
Mold1	PR lith-SU8	50,75,100um
	Channel width/length	100um/5cm
Mold2	PR lith-AZP4620	7,8,9um
	Channel width/length	30um/5cm
Metal 1	M1 dep. (Cr)	0.02um~0.05um
Metal 2	M2 dep. (Au)	0.15um

## Microelectrodes in a Microfluidic chip

### (a) Microelectrode-based Sensors/Actuators in a Microfluidic Chip



### (b) Face-to-Face Microelectrodes in a Microfluidic Chip

